

FAR WEST SKI ASSOCIATION

THE

COUNCILMAN

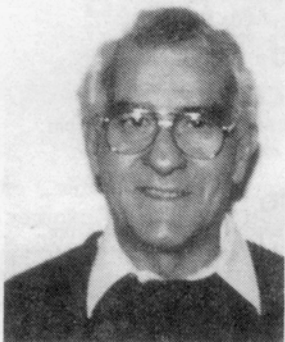
VOLUME VIII

NUMBER 3

JANUARY/FEBRUARY 1990

PRESIDENT'S REPORT

by Michael Favia



Two of our major activities, Sportsfest and 1990 FWSA Ski Week, are successfully behind us. Although the snow at Telluride was marginal, all the parties, races, and banquets were well attended and provided a lot of fun for everybody. Fay Mumbauer and her staff are congratulated for a job well done. My only regret is that I was unable to participate in all the activities because of the flu.

We are now busy preparing for the FWSA 1990 Annual Convention as well as developing plans for expanding the growth of the Far West Ski Association. The Communications and Public Affairs programs have progressed according to plan, in spite of the fact that they have been operating with a very limited budget. This leads into the crux of my article. To date, most, if not all, of our funds have come from the revenue of our Silent Auctions; the Skier's News and Skiers Guide have been mainly financed by the sales of advertising. The last issue of SkiWatch contained a listing of programs that are needed to support ski areas development and ski area issues that must be addressed. This requires dedicated volunteers and finances.

We are currently developing a fund raising program that will provide the money required to support our ski area development, safety programs and other related activities. We will need your dedicated support. In conclusion: Don't forget to mail your written comments to the revised Sherwin Bowl Ski Area DEIS to be postmarked not later than 12 February. The FWSA PUBLIC AFFAIRS PROGRAM NEEDS YOUR FINANCIAL SUPPORT. Please solicit your Board and clubs for immediate contributions.

BALBOA SKI CLUB CHALLENGES ALL FWSA SKI CLUBS TO

**"EXPRESS YOURSELF" IN THE JIMMIE HEUGA
SKI EXPRESS MARCH 3-4, 1990 SNOW SUMMIT
SKI AREA**

Scott, Gus and Team Captain, Pat Nangle of the Balboa Ski Club, challenges all ski clubs in Southern California to "Meet The Challenge" and EXPRESS THEMSELVES in the 1990 Snow Summit Mazda Ski Express to benefit the Jimmie Heuga Center. Nangle, who is also President of the Orange Council, FWSA and her teammates are sending out a challenge to all ski clubs to form a three person co-ed team and enter the MAZDA Ski Express.

The event is a ski-a-thon in which the teams ski for four hours nonstop, with the purpose of seeing who can log the most vertical feet and, via their sponsors' pledges, raise the most money for the Jimmie Heuga Center, a non-profit research organization "Reanimating the Physically Challenged. This year, for the first time, the event will include a dual giant slalom. Winning teams at each event are awarded prizes, including trip to compete at the National Finals April 4-9 at Vail and Beaver Creek, CO., where they will be joined by a "Who's Who" of celebrities and skiing superstars.

The Snow Summit MAZDA Ski Express (March 3-4, 1990) will be hosted by World Ski Champion Steve McKinney and several other ski celebs. McKinney will conduct a special ski clinic for all Express teams and the general public.

NEW THIS YEAR: An expanded format...two days of competition and fun. THE EXPRESS MARATHON, although shortened to four hours, continues to be the highlight of the Express program (and for most skiers..."The biggest adrenalin rush of the ski season" says Pat Nangle of the Balboa Ski Club.)

DUAL GIANT Slalom, a fun course open GS will be held in the afternoon. Total team times will determine the winners.

Continued on page ten

FAR WEST SKI ASSOCIATION

1989 - 1990

BOARD OF DIRECTORS

PRESIDENT

* Mike Favia '90
18541 Montpere Way
Saratoga, CA 95070
Res. (408) 378-7685
FAX (415) 969-2880

PAST PRESIDENT

* Howard Wickersham '90
7222 Monterey Lane
La Palma, CA 90623
Res. (714) 994-6859

SECRETARY

Karen Kimball '90
2600 Konynenburg Lane
Modesto, CA 95336
Res. (209) 524-4282

TREASURER

* Jim "Orca" Williams '90
6675 Camp Verde Way
Sacramento, CA 95828
Res. (916) 381-8616

V.P. of PUBLIC AFFAIRS

John Watson '91
5005 Via El Sereno
Torrance, CA 90505
Res. (213) 373-7555

V.P. of TRAVEL

Lauren Nagle '91
P. O. Box 27
San Luis Obispo, CA 93406
Res. (805) 544-9497
FAX (805) 541-1875

V.P. of ATHLETICS

Woody Hogan '91
1264 S. Filbert
Exeter, CA 93221
Res. (209) 592-5435

V.P. of MEMBERSHIP

Lisa McCarty '90
100 E. Middlefield Road #3B
Mountain View, CA 94043
Res. (415) 965-1896

V.P. of COMMUNICATIONS

Mary Costigan '90
10323 E. Olive Street
Temple City, CA 91780
Res. (818) 575-0920
FAX (818) 448-5785

V.P. of DEVELOPMENT

Gene Fulkerson '90
1650 Chatsworth Blvd.
San Diego, CA 92107
Res. (619) 224-4221

V.P. of COUNCILS

Paul Arrigo '91
3 Heritage Oaks Road
Pleasant Hill, CA 94523
Res. (415) 372-0207
FAX (415) 372-6098

BOARD OF TRUSTEES -

CHAIRMAN

Steve Williams '90
142 Pepperall Court
Vacaville, CA 95688
Res. (707) 448-1211

BOARD OF TRUSTEES

CHAIRMAN

* Steve Williams '91
142 Pepperall Court
Vacaville, CA 95688
Res.: (707) 448-1211

* Janie "Frankie" Hansen '90
3921 Beverly Glen Blvd.
Sherman Oaks, CA 91423
Res.: (818) 990-1630

* Jim Ortiz '91
1910 Roosevelt #1
San Diego, CA 92109
Res.: (619) 275-2598

* Jane Wyckoff Clark '90
1521 Kalua Lane
Tustin, CA 92680
Res.: (714) 731-6164

* Plus three ex officio members

COUNCIL PRESIDENTS

BAY AREA COUNCIL

Gayle Grant '89 - '90
244 Jackson Street
San Francisco, CA 94111
Res. (415) 254-2622

CENTRAL COUNCIL

Gloria Raminha '89 - '90
4701 Country Place Lane #A
Bakersfield, CA 93309
Res. (805) 835-7558

INLAND COUNCIL

Robert Jimenez '89 - '90
12633 Reid Street
Grand Terrace, CA 92324
Res. (714) 783-4695

LOS ANGELES COUNCIL

Grady Smith '89 - '90
2310-B Marshallfield Lane
Redondo Beach, CA 90278
Res. (213) 374-7386

ORANGE COUNCIL

Pat Nangle '89 - '90
300 E. Coast Highway #8
Newport Beach, CA 92660
Res. (714) 673-2281
FAX (818) 331-3402

SAN DIEGO COUNCIL

Norm Cullen '89 - '90
3520 29th Street
San Diego, CA 92104
Res. (619) 296-3222

SIERRA COUNCIL

Carol Weaver '89 - '90
2580 Rio Bravo Circle
Sacramento, CA 95826
Res. (916) 366-0719

COUNCILS

BAY AREA COUNCIL

2nd Monday 8:00 pm
San Bar Cocktail Lounge
San Mateo Municipal Golf Course
San Mateo, CA

CENTRAL COUNCIL

Every 4-6 Weeks as needed
Hosted by different Central
Council Clubs
Location varies

INLAND COUNCIL

1st Monday 7:30 pm
Reuben's Restaurant
335 N. Mountain Avenue
Upland, CA

LOS ANGELES COUNCIL

1st Monday 7:30 pm
Joe Petrelli's Steak House
5614 Sepulveda Blvd.
Culver City, CA 90232

ORANGE COUNCIL

2nd Monday 7:30 pm
Various residences

SAN DIEGO COUNCIL

1st Wednesday 7:00 pm
No. Clairemont Recreation Center
4421 Bannock Avenue
San Diego, CA 92117

SIERRA COUNCIL

No set schedule - as needed
Locations vary

FAR WEST SKI ASSOCIATION

General Guidelines:

The FWSA Board of Directors meets at least quarterly. There is a short meeting of the new Board immediately following the Annual Convention; a summer meeting sometime in June, July or August; a fall meeting, usually in October at the FWSA Sportsfest; a winter meeting, usually in February at Far West Ski Week; and a spring meeting usually in April or May (about 4-6 weeks prior to the Annual Convention) held at the hotel where the upcoming Convention will be held.



(L to R) Jerry Blann, President of Bear Mountain Ski Resort; Preston L. Smith, Owner of Ski Limited; KelLe Malkewitz, Dir. of Calif. Handicap Ski School; James Stacy, CHSF Trustee; Sallie Pritchard, CHSF President; Ray Herzog, CHSF Dir. of Strategic Planning; Thomas Guth, Certified Prosthetist with RGP Orthopedic Appliance, Inc.

CALIFORNIA HANDICAP SKI SCHOOL DEDICATED AT BEAR MOUNTAIN SKI RESORT

By Jane Wyckoff Clark, FWSA Trustee

The California Handicapped Skier's Foundation dedicated its Handicap Ski School at Bear Mountain Ski Resort on December 17, 1989. This Ski School is the culmination of six years of fund raising efforts by the Foundation to support handicap ski programs.

The CHSF received a grant of \$101,950 from the Athletic Foundation of Los Angeles to conduct the Handicap Ski School. This Foundation holds part of the surplus from the 1984 Olympics. Director of the Ski School is KelLe Malkewitz,

formerly with the Winter Park Handicap Program at Winter Park, Colorado.

Speakers at the dedication included celebrities James Stacy and Lee Majors. Both men have been members of the CHSF's Advisory Board since the founding of the organization in 1983. The actors appeared together in the 1977 television movie "Just A Little Inconvenience", for which Stacy received an Emmy nomination.

Over the years, the California Handicapped Skier's Foundation conducted Celebrity Ski Races and Exhibitions at Goldmine, now called Bear Mountain Ski Resort. Jerry Blann, President of Bear Mountain Ski Resort, is exceptionally pleased to have such a fine program located there and pledged continued support of the Handicap Ski School.

Also speaking at the dedication was Thomas Guth, certified prosthetist and co-owner of RGP Orthopedic Appliance, Inc. Guth presented CHSF President Sallie Pritchard with a check for \$2,500 from RGP. RGP was an associate sponsor of the ChapStick Challenge regional race and learn-to-ski clinic also held at Bear Mountain Ski Resort January 4-7, 1990. Guth feels that "A strong local disabled ski program will provide more Southern Californians with the chance to compete on the national and international level".

I had the honor of speaking on behalf of the recreational skiers that have supported handicap ski programs. Recognized were the Far West Ski Association, the U.S. Recreational Ski Association, the local ski club councils and a variety of ski clubs that have all assisted in our efforts to not only generate funds but also to heighten public awareness of handicap ski programs. FWSA has also recognized outstanding achievements in handicap program development. Recipients of the Jimmie Heuga Award for outstanding humanitarian service to the sport of skiing include James Stacy, Lynne Haile, and Doug Pringle. Sallie Pritchard was the 1985 recipient of the Elizabeth "Schatzi" Wood Award as outstanding Woman of the Year.

Appropriately, the permanent plaque at the entrance to the Handicap Ski School reads:

"California Handicap Ski School at Bear Mountain dedicated December 17, 1989. Made possible by the generous support of many Southern California organizations and individuals, including the Amateur Athletic Foundation of Los Angeles, Bear Mountain Ski Resort and recreational ski clubs."



(Left) T.V. Personalities James Stacy and Lee Majors dedication of California Handicap Ski School, December 17, 1990

(Right) (L to R) James Stacy, CHSF Trustee; KelLe Malkewitz, Dir. of Calif. Handicap Ski School; Lee Majors, CHSF Advisory Board; Sallie Pritchard, CHSF President; Ray Herzog, CHSF Dir. of Strategic Planning. Photographs by Mary Wendt, Freelance Photographer.



60TH ANNIVERSARY FWSA CONVENTION SET FOR JUNE 1-3 IN IRVINE

by Pat Nangle, FWSA Convention Coordinator

The 58th Annual Convention of the Far West Ski Association will be held June 1-3, 1990 at the elegant Irvine Hilton Hotel and Towers, hosted by the Orange Council and Schuski League. This October marks the 60th Anniversary of the founding of FWSA. Therefore, we invite you all to attend the events and programs of this special Anniversary Convention.

The Annual Meeting/Convention provides your ski club delegates with an opportunity to participate in and determine the direction of your ski association. A wide variety of social, business and fund raising programs highlight the weekends events. They include:

- Friday evening Silent Auction/Dance -- with over \$45,000 in ski trips, equipment and ski/sports related items on the auction block.
- Saturday morning Travel Carousel -- with a fabulous Grand Door Prize to be awarded among the attendees.
- Saturday evening Awards Banquet/Dance.
- Hosted parties all weekend long.
- A fund raising raffle for all ski clubs-- with a Grand Prize of a trip for two to Las Lenas, Argentina to FWSA Ski Week International, donated by Las Lenas/SkiL International
- Councils Man and Woman of the Year competition
- Outstanding Ski Club and Ski Club Publication competitions
- Saturday afternoon panel discussions with an exciting new direction, organized by the FWSA VP of Councils' committee
- Meetings of the Far West Racing Association
- Election of officers, by-laws, and resolutions

During the next two months, YOUR SKI CLUB WILL RECEIVE A VARIETY OF MAILINGS outlining the various events and programs of the Convention/Annual Meeting. Be sure to look for them and take note of time deadlines, particularly for room reservations pre-registration, and credentials.

Our convention chairmen and their committees are spending many volunteer hours preparing a well-organized and fun weekend for all participants. Feel free to call us with any questions that you might have.

They are as follows:

FWSA Convention Coordinator	Pat Nangle (714) 673-2281
Host Coordinator	Dave Whittaker (714) 963-4175
Silent Auction	
Coordinator	Jane Wyckoff Clark (714) 731-6164
Host Chairman	Bob Larkin (714) 826-9502
Assistants	George Thompson (213) 439-4626 Joyce Spurgeon Griffith (714) 841-2173
Annual Meeting Chairman	Mike Favia (408) 378-7685

Registration	
Coordinator	Janie "Frankie" Hansen (818) 990-1630
Host Co-Chairman	Elliott Jones (714) 669-0733 Marc Goodman (714) 548-3980
Finances	Janie "Frankie" Hansen (818) 990-1630
Operations Chairman	Janet Bradtl (714) 644-6403
Sponsorships	Gene Fulkerson (619) 224-4221
Door Prizes Chairman	Dave Whittaker (714) 963-4175
Social Co-Chairman	Joyce Crawford (213) 925-9779 Bill Clark (213) 867-3922
Travel Carousel	Lauren Nagle (805) 544-9497
Publicity & Promotion Co-Chairman	Maureen Bivins (714) 262-0747 Nancy Cassavant (714) 548-0428
Service Awards Chairman	Alan Christian (415) 820-7288
Bill Berry Award Chairman	John Rosenfeld (213) 327-2347
Raffle Chairman	Mike Gagliano (714) 639-3329
Door Co-Chairman	Bill Clark (213) 867-3922 Shawn McBirney (714) 530-9688
Credentials Chairman	Lisa McCarty (415) 965-1896
Printed Program Chairman	Mary Costigan (818) 575-0920
Election Committee/Resolutions Chairman	John Watson (213) 373-7555
By Laws Chairman	Janie "Frankie" Hansen (818) 990-1630
Parliamentarian	Steve Williams (707) 448-1211
Councils Man & Woman of the Year	Pat Nangle (714) 673-2281
Competition Chairman	Woody Hogan (209) 592-5435
Outstanding Ski Club & Ski Club Publication Chairman	TBD



FAR WEST SKI ASSOCIATION

presents its

60th Anniversary Party & 58th Annual Convention

(Hosted by the Orange Council Ski Clubs and Schusski League)

JUNE 1 - 3, 1990

(Friday evening through Sunday afternoon)

Irvine Hilton Hotel

Special Convention Room Rate - \$75.00 + tax

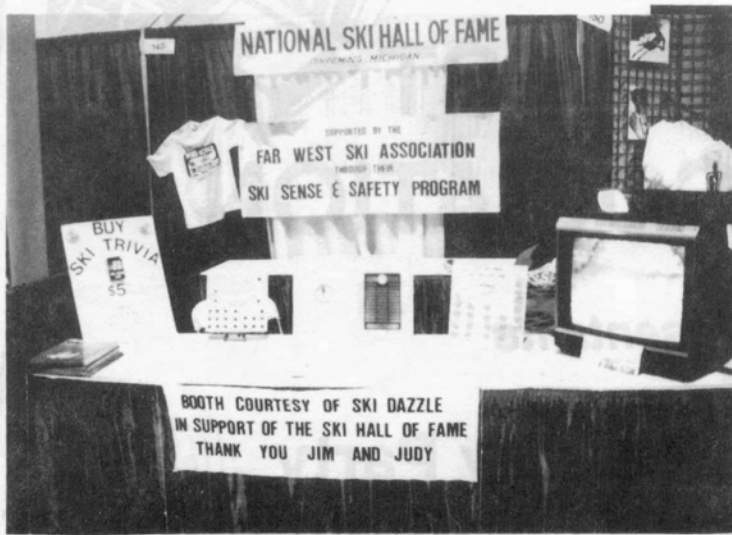
(double occupancy)

Come and enjoy a fun-filled weekend in beautiful **IRVINE** in the heart of **ORANGE COUNTY, CALIFORNIA.**

CONVENTION REGISTRATION PACKAGE includes Delegate Packet, Cocktail Parties, Breakfast, Lunch, Dinner, Brunch, Ski Industry Displays and **Friday night DANCE** and Silent Auction.

Contact your Club's President for Convention Registration and special airfare information.

1990 FWSA Convention Coordinator - PAT NANGLE (714) 673-2281



S
K
I

D
A
Z
Z
L
E

Thanks go to Jim Foster and Judy Gray, owners of Gemini Productions for their continuing support of the U.S. National Ski Hall of Fame. They again donated a booth for Hall of Fame use at their big Los Angeles "Ski Dazzle" ski show. Far West Ski Association members staffed the booth and used their "Ski Sense and Safety" program to help raise funds for Hall of Fame Support



Steve Kanaly, star of the television series "Dallas" and creator & volunteer producer of "SKI VII" (Steve Kanaly Invitational Celebrity Ski Classic) in its 7th year benefitting the March of Dimes, visited the Ski Hall of Fame booth run by Janie "Frankie" Hansen, psst president of the Far West Ski Association at "Ski Dazzle in L.A.

L.
A.

S
K
I

S
H
O
W

TELLURIDE '90 FWSW RACE AND EVENT RESULTS

Winter Carnival Sunday January 28, 1990

Obstacle Course

PLACE	MEN	TIME	CLUB	MEDAL	PLACE	WOMAN	TIME	CLUB	MEDAL
1st	Helmut Lempacher	45.03	GRI	G	1st	Jean Shaffer	52.65	IND	G
2nd	Dave Clark	46.72	BAL	S	2nd	Suzy Krammen	55.95	GRI	S
3rd	Mike Bell	49.73	SEQ	B	3rd	Denise Heinlein	56.90	BC	B

Backwards Race

PLACE	MEN	TIME	CLUB	MEDAL	PLACE	WOMAN	TIME	CLUB	MEDAL
1st	Dave Clark	15.43	BAL	G	1st	Linda Christlano	19.92	IND	G
2nd	Gene Fulkerson	18.55	IND	S	2nd	Bettie Bell	21.42	SEQ	S
3rd	Fred Yamashita	20.17	GRI	B	3rd	Judi Smith	23.56	FW	B

Monday - January 29th

Council Challenge Cup

PLACE	MEN	TIME	CLUB	PLACE	WOMAN	TIME	CLUB
1st	Dave Clark	21.16	BAL	1st	Suzy Krammen	25.07	GRI
2nd	Helmut Lempacher	22.30	GRI	2nd	Jean Shaffer	25.09	FW
3rd	Mike Bell	23.13	SEQ	3rd	Lynn LeGras	25.37	SEQ

Valentine's Party

Arm Wrestling

PLACE	MEN	CLUB	PLACE	WOMAN	CLUB
1st	Wojtek Paczocha	IND	1st	Claudia Broere-Miller	BC
2nd	Robert Schumacher	OA	2nd	Robin Moonleham	BAL
3rd	Lester Hirbar	BC	3rd	Jacquelynne Leiker	GRI
	Sam Lage	IND		Sandy Jaki	FW

Dart Throw

PLACE	MEN	SCORE	CLUB	PLACE	WOMAN	SCORE	CLUB
1st	Kurt Anderegg	163	GRI	1st	Sonja Fryxell	92	GRI
2nd	Don Myers	97	GRI	2nd	Jacqui Paley	79	BAL
3rd	Kurt Myers	91	GRI	3rd	Mary Carver	71	GRI

Winnie Dip

PLACE	MEN	TIME	CLUB	PLACE	WOMAN	TIME	CLUB
1st	Stephen Mathews	4.23	BC	1st	Jean Shaffer	6.51	FW
2nd	Henry Johnson	6.33	SEQ	2nd	Sharon Johnson	7.44	SEQ
3rd	Mike Bell	6.56	SEQ	3rd	Deborah Weller	7.75	BC

Beer Chug

PLACE	MEN	TIME	CLUB	PLACE	WOMAN	TIME	CLUB
1st	Lee Angel	3.08	IND	1st	Lynn LeGras	5.46	SEQ
2nd	Kurt Myers	3.41	GRI	2nd	Shirley Kribbs	6.14	GRI
3rd	Rudy Thiel	4.01	FW	3rd	Jacquelynne Leiker	6.24	GRI

Wednesday - January 31st

Joe Ross Memorial

MEN	TIME	CLUB	MEDAL	MEN (continued)	TIME	CLUB	MEDAL
Helmut Lempacher	28.80	GRI	G	Tom Sadler	38.88	GRI	B
Dave Clark	28.92	BAL	G	Kurt Myers	40.04	GRI	B
Michael Seydor	29.24	BC	G	Billy Gammel	42.28	GRI	B
Woody Hogan	31.19	SEQ	G	Noel Patter	40.85	GRI	B
Mike Bell	32.05	SEQ	G	Bruce Pollak	40.87	GRI	B
David Robertson	30.54	HJ	G	Sam Lage	43.16	IND	B
Fred Yamashita	33.19	IND	G	Carl Palczewski	41.05	BC	B
Gene Fulkerson	33.42	SEQ	G	Marvin Schaffer	41.35	IND	B
Barry Johnston	33.50	SEQ	G	Lloyd Groseth	43.74	GRI	B
Howard Wickerham	32.21	SEQ	G	Gary Swingle	41.89	HJ	B
Lester Yano	33.94	HJ	G	Jack Romano	44.24	FW	B
Stephen Mathews	33.09	BC	G				
Peter Schweizer	34.11	BC	G				
Allen Spiegler	34.12	BC	S				
Raymond Bell	35.97	SEQ	S				
Steven Engel	36.30	GRI	S				
Ted Osgood	34.73	OA	S				
Jackson Voorhies	34.74	BAL	S				
Gary Patton	35.31	GRI	S				
Gene Thompson	35.36	OA	S				
Bob Larkin	37.49	BAL	S				
Rudy Thiel	35.64	FW	S				
Mel Albrandt	37.54	BC	S				
Kermit Wagner	35.85	SEQ	S				
Patrick Dang	37.92	GRI	S				
Dean Smith	36.05	OA	B				
Charlie Engle	38.35	BC	B				
Albert Padilla	38.46	GRI	B				
Robert Schumacher	36.70	OA	B				
Sam Steiner	36.80	GRI	B				
Kent Kelgwin	39.30	BC	B				
Henry Johnson	39.60	SEQ	B				
Max Waser	39.82	BC	B				
Eric Mundaauer	37.89	GRI	B				
Anton Paley	38.33	IND	B				
Don Myers	38.39	GRI	B				
Michael Martin	38.41	BC	B				
William Pollak	38.49	GRI	B				
Wojtek Paczocha	38.53	IND	B				

Joe Ross Club Scores Total

1st Sequoia with 989 Points
3rd Beach Cities with 900 Points
5th Far World with 411 Points
2nd Grindelwald with 929 Points
4th Balboa with 564 Points
6th Osgood Army with 386 Points

Costume Party

Best Male Costume

PLACE	MEN	CLUB	PLACE	WOMAN	CLUB
1st	Chuck Dickerson	BAL	1st	Marcie Pedigrew	BC
2nd	Robert Schumacher	OA	2nd	Muriel Watson	GRI
3rd	Alvin Reed	FW	3rd	Nancy Morgan	BAL

Funniest Male Costume

PLACE	MEN	CLUB	PLACE	WOMAN	CLUB
1st	Michael Seydor	BC	1st	Claudia Broere-Miller	BC
2nd	Loren Booth	GRI	2nd	Joanne Crawford	BAL
3rd	Stephen Mathews	BC	3rd	Shelley Petersen	BC

Funniest Female Costume

Costume Party Continued

Most Original Male Costume

PLACE	MEN	CLUB
1st	Dave Clark	BAL
2nd	Noel Petter	GRI
3rd	Jory Gorcey	IND

Most Original Female Costume

PLACE	WOMAN	CLUB
1st	Joyce Yamamoto	BC
2nd	Dee Liudzius	GRI
3rd	Denise Heinlein	BC

Best Couple Costume

PLACE	NAMES	CLUB
1st and	Pat Mumbauer Eric Mumbauer	GRI GRI
2nd and	Sheila Van Guilder Bernie Warsinger	BAL BAL
3rd and	Margaret Pollak William Pollak	GRI GRI

Best Group Costume

NAME	CLUB
Joe Costigan	GRI
Mary Costigan	GRI
Patrick Dang	GRI
B. J. Flood	GRI
Don Fryxell	GRI
Sonja Fryxell	GRI
Suzy Kvammen	GRI
Don Myers	GRI
Nancy Owens	GRI
Tom Sadler	GRI
Dean Smith	OA
Gloria Smith	OA

Thursday, February 1, 1990

Alpine Criterion

PLACE	MEN	TIME	CLUB	MEDAL	PLACE	MEN (continued)	TIME	CLUB	MEDAL
1st	Dave Clark	41.56	BAL	G		Ted Osgood	58.62	OA	B
2nd	Fred Yamashita	45.83	GRI	G		Sam Steiner	58.74	GRI	B
3rd	David Robertson	46.07	HJ	G		Gene Thompson	59.07	OA	B
4th	Gene Fulkerson	46.89	IND	S		Kent Keigwin	59.83	BC	B
5th	Woody Hogan	46.92	SEQ	S		George Ikeda	60.19	GRI	B
6th	Allen Spiegler	48.64	BC	S		Raymond Bell	60.19	SEQ	B
7th	Gary Patton	49.01	GRI	S		Don Myers	60.59	GRI	B
8th	William Hedrick	49.77	BC	S		Charlie Engle	60.64	BC	B
9th	Peter Schweizer	51.37	BC	S		Rudy Thiel	60.65	FW	B
	Steven Engel	52.62	GRI	B					
	Stephen Mathews	52.81	BC	B					
	Sam Lagge	53.04	IND	B					
	Mike Bell	53.18	SEQ	B					
	Lester Yano	53.36	HJ	B					
	Lester Hribar	54.91	BC	B					
	Donald Calley	55.09	GRI	B					
	Patrick Dang	56.94	GRI	B					
	Max Waser	57.13	BC	B					
	Michael Martin	57.56	BC	B					
	Howard Wickersham	57.73	IND	B					

PLACE	WOMEN	TIME	CLUB	MEDAL
1st	Suzy Kvammen	53.46	GRI	S
2nd	Marcie Pettigrew	54.36	BC	S
3rd	Jean Shaffer	55.27	FW	B
4th	Bettie Bell	55.97	SEQ	B
5th	Joyce Yamamoto	57.03	BC	B
6th	Wilma Tisch	58.73	BAL	B
7th	Lynn LeGras	58.92	SEQ	B
8th	Jacqualyne Leiker	64.40	GRI	
9th	Judi Smith	64.64	IND	

SKIER OF THE WEEK

PLACE	MEN	CLUB	PLACE	WOMEN	CLUB
1st	Dave Clark	BAL	1st	Suzy Kvammen	GRI
2nd	Mike Bell	SEQ	2nd	Jean Shaffer	FW
3rd	Helmut Lerpcher	GRI	3rd	Marcie Pettigrew	BC
4th	Robert Schumacher	OA	4th	Lynn LeGras	SEQ
5th	Michael Seydor	BC	5th	Claudia Broere-Miller	BC



Sequoia retains the Joe Ross Trophy. Mike Favia and Fay Mumbauer makes the presentation of the Trophy.



Far West Telluride '90 Ski Week Staff (L to R) Fay Mumbauer, Chairwoman, and her staff Woody Hogan, Joe and Mary Costigan, Howard Wickersham and Jory Gorcey.



Dave Clark, third from right, Skier of the Week and various winners of medals for participation in Ski Week Events.



Suzy Kvammen, kneeling right, Skier of the Week and winners of various medal winners for participation in Ski Week Events



Group Leaders (L to R) from, Sequoia, Far World, Balboa, Beach Cities and Osgood Army. Not Shown, Grindelwald Group Leader.



Fay Mumbauer is presented a plaque by Helmut Lerpcher on behalf of the Grindelwald Ski Club, since this was her last event as V. P. of Travel for Far West Ski Association, to show their appreciation, for many years of service, and a job well done.

Continued from page one

Besides all the skiing fun and competition, all teams will be hosted to a competitor breakfast and lunch and invited to the very special awards party.

The winning team will receive a Trip to Vail along with a complete team uniform to wear at the Vail Finals. The top teams will receive Raichle Ski Boots, Tyrolia bindings, Allsop poles and accessories from CB Sports, Bolle, Moriaty and Thor-10. Roffe is presenting uniforms to the winners. Many other gifts will be given to the teams.

Jimmie Heuga is a former Olympic medal winning skier and competitor in the Far West Ski Association's Junior ski racing program. During the height of his racing career on the US Ski Team, he was diagnosed as having Multiple Sclerosis. He was urged to live a quiet and tranquil life. He began to have less energy, feel unhealthy and unmotivated and began to deteriorate physically and mentally. In 1976, Jimmie decided to take charge of his life. He developed a program of cardiovascular endurance, and using his athletic background, began stretching and strengthening exercises. Next he established goals for his personal "reanimation" program. IN 1984, inspired by his own success, he founded the Jimmie Heuga Center for the

"Reanimation of the Physically Challenged," a nonprofit organization with headquarters in Vail, CO. Two-dozen of Jimmie's friends skied the first Express in Alaska in 1985, thus the first Ski Express was formed. Today, twenty-five ski resorts in the USA and Canada Host the Ski Express.

WE CHALLENGE YOU TO "EXPRESS YOURSELF" IN THE 1990 MAZDA SKI EXPRESS TO BENEFIT THE JIMMIE HEUGA CENTER TO BE HELD AT SNOW SUMMIT SKI AREA MARCH 3-4, 1990. THE BALBOA SKI CLUB WILL BE THERE. WE CHALLENGE YOU!

For more information on forming or sponsoring a team, write or call:

JIMMIE HEUGA SKI EXPRESS

World Event Coordinators, Inc .

P.O. Box 2512

La Habra, CA 90631

(213) 697-8941

V.P. COUNCIL AFFAIRS REPORT

**COUNCIL PRESIDENTS MEETING
October 21-22, 1989**

by Paul Arrigo

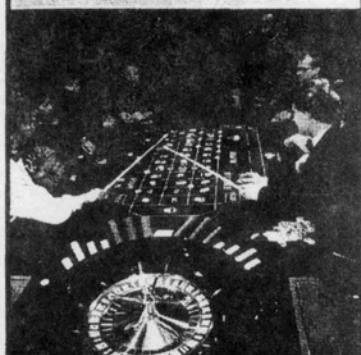
Met with Council Presidents in Santa Ana both Saturday and Sunday. Discussions centered on FWRA unification, Leadership Seminar, insurance and elections at Convention. Council Presidents are still behind the unification of FWRA and our discussion pertained to meeting with George Eachus the previous evening. The meeting provided me with some insight into the Association which I had not previously known about. It appears their corporate structure is much to cumbersome to immediately transfer into FWSA. A hands off policy was discussed at length meaning that they would not be a party to use of their funds to fund any FWSA project. The need for sponsors was discussed and I believe that we can fulfill that need not only for ourselves, but also for FWSA. Mr. Eachus stated that FWRA would be very happy to run any race that we would like to hire him for a nominal sum, such as a free trip to our annual ski week. We both stated that we would meet again after further discussions with our Boards and that Mr. Cotozzi would also join us.

INSURANCE. This was discussed at length and the consensus opinion was that a less expensive policy was needed especially for the smaller clubs and councils. A few of the Presidents were happy with the current Scottsdale policy they now have for obvious reason. Their Boards are not covered and that if we did find another policy, perhaps they would not enjoy the same

coverage. I have done some extensive research into this subject and at the present time, I have no further information to report except that of the definite possibility that a new policy should be written centered around our own particular needs as ski clubs, associations and councils. To the best of my knowledge, no such policy exists and I think that the FWSA should endeavor to write its own policy and serve it on a National level. With this, we may be able to generate funds for our own programs and also possibly offer low cost coverage for all of our members and those from other parts of the country.

LEADERSHIP SEMINAR. Everyone is excited about this. It was unanimous that this should be used in place of the previous Saturday meetings, we all know are useless, and uninformative. Discussions were centered around content, time and who would lead seminars.

DISCOUNT LIFT TICKETS. The committee head has not given me any information about this. Consequently, no report. The next two meetings will determine if this Board has proven to be effective in its promises to its members. It appears that we are on the right track and we are accomplishing what we have set as our Goals and Missions statement at the beginning of our term. We still have some items that have not been addressed such as funding of our programs, changes in Convention format and a means of getting FWSA more publicity. I am sure if we put our heads together, we can come up with ideas that can be put into motion and thrust us forward into the next decade where we can have an impact on recreational skiing.



**FAR WEST SKI ASSOCIATION
Summer Ski Trip
August 30 - September 9, 1990**



Las Leñas (Argentina)



SKI LAS LENAS in excellent snow conditions, unsurpassed in quality and quantity. Days are sunny, nights are star-studded, From your hotel doorstep at the base camp of 7,402 feet, lifts are programmed for rapid ascent to 11,253 feet. Skiers enjoy more time on 40 miles of groomed slopes; less time reaching the top. And, on international television during 1986/87 and 1989 World Cup Mens/Womens Downhills, Lifestyles of the Rich & Famous and the upcoming First Pan American Winter Games in September, 1990. Experts rate the total ski complex "one of the best all-around ski resorts in the world." **Las Leñas** offers state-of-the-art facilities, 40 miles of ski terrain and fun-filled apres ski activities.

SKI SPECIAL is one week of skiing **Las Leñas** and one night in **Buenos Aires**.

LAND ONLY for those who have built up their frequent flyer points or those members who are employed by the airline and receive airline passes.

BUENOS AIRES -- cosmopolitan atmosphere, the city that never sleeps. A veritable shoppers paradise.

Your Far West Ski Association Las Leñas holiday

More than you expect.....

much , much more

SPECIAL EVENTS; Welcome cocktail party, night skiing dinner party at the mountaintop restaurant - Bacus - , guided out-of-bounds ski adventure, farewell party at Las Leñas, dinner and tango show in Buenos Aires.

INCLUDED: RT air on scheduled airline from Los Angeles to Buenos Aires; baggage handling; RT air from Buenos Aires to Malargue (airport to Las Leñas); ground transfer from Malargue to Las Leñas; 7 nights Escorpio and Apartment accommodations in Las Leñas, three meals daily (breakfast, lunch and dinners); unlimited use of ski lifts; tax and service. Also included: transfers between hotel and airport in Buenos Aires; continental breakfast in Buenos Aires with a dinner/tango show.

NOT INCLUDED: Cost of visas (if any); personal expenses (laundry, etc.); beverages other than coffee/tea with meals in Las Leñas; ski lessons/ski equipment and rentals; bottled soft drinks, wines and other alcoholic beverages.

(Itinerary and Terms & Conditions on reverse side)

Call for information:

Mike Favia
408-378-7685
BAY AREA

Don Shore
714-794-3400
RIVERSIDE AREA

Bill Altaffer
619-934-8451
MAMMOTH LAKES

George Thompson
213-439-4626
ORANGE COUNTY

Represented in North America by:

Skil International Reservations, Inc. 9592 Harding Avenue, Second Floor, Surfside, FL 33154
In Florida (305) 864-7545; outside of Florida 800-862-7545; Telex 529476 SKIL MIA UD



Las Leñas

FAR WEST SKI ASSOCIATION
August 30 - September 9, 1990

LAS LENAS
(Argentina)

SKI SPECIAL

7 nights *Las Lenas*
1 night *Buenos Aires*

Rates: Escorpio/Acuario/Apartments

\$1626 - **DOUBLE**
\$2176 - Single

Rates based on ROH (Run of House) in
all 4-star accommodations.

Itinerary:

Aug. 30 (Thu) -- Depart Los Angeles 11:55am
on scheduled airline to Buenos Aires.

Aug. 31 (Fri) -- Arrive Buenos Aires 5:10am.
Transfer to first class hotel. Afternoon free.
Evening dinner/tango show.

Sept. 1 (Sat) -- Breakfast in hotel. Early
morning transfer from hotel to Aeroparque for
flight to Malargue and bus transfer to Las
Lenas.

Sept. 1-8 (Sat-Sat) -- *Las Lenas*

Sept. 8 (Sat) -- Transfers from Las Lenas to
Malargue for flight to Buenos Aires and
transfers to International Airport for flight
to Los Angeles.

Sept. 9 (Sun) -- 8:40am arrival in Los Angeles.

#####

Deposits may be made by **check** or **Visa/Mastercard**
payment.

Final payments must be made by check.

OPTIONS.....

For those of you who may be under a frequent flyer
program/airline employee pass program or for those
who wish to arrive in Buenos Aires a couple of days
before the rest of the group.....we have worked
out additional rates that can be handled with you
on an individual basis.

***LAND ONLY** - Includes RT flight from domestic airport
to Las Lenas, 7 nights accommodations, meals
and lift pass, per person:

\$ 819 - **DOUBLE**
\$1254 - Single

*Does **not** include departure tax of \$10 per person.

BUENOS AIRES - 2 night pre-stay, based on per person:

Aug. 28 (Tue) - 11:55am departure from Los
Angeles to arrive BUe Aug. 29 - 7:05am.

Includes RT transfers - \$ 90 - **DOUBLE**
\$135 - Single

For your information: Airlines allow maximum stay
of 21 days outside the U.S. Call for airfare
differential should you want to exceed the
allowance.

PLEASE NOTE: All prices and schedules subject to
change without notice.

#####

Checks should be made payable to and mailed to:

Far West Ski Association
Lauren Nagle/FWSA VP of Travel
P.O. Box 27
San Luis Obispo, CA 93406
805-544-9497

TERMS & CONDITIONS

PAYMENT: \$100 per person initial deposit due with reservation/application on February 10, 1990. Second deposit
of \$500 per person due March 1, 1990; third deposit of \$500 per person due on May 1, 1990. Final payment of \$526
due on June 1, 1990. For those with **Land only**, a separate schedule of payments will be worked out.

CANCELLATION AND REFUNDS: \$50 service fee per person will be charged up to 60 days prior to departure; less than
60 days prior to departure, \$100 service fee plus penalties and expenses incurred by the FWSA which may be as much
as 20% for written cancellation received 60-46 days prior to departure; 40% on 45-31 days prior to departure; up
to 100% (no refund) for 30 days or less. Participants are urged to purchase travel insurance.

BAGGAGE: One pair of skis/poles are defined as one piece of baggage measuring 55 inches. If you have only one
suitcase to be checked in, then one pair of skis/poles will be accepted as the remaining part of your free baggage
allowance. If ski equipment is in excess of free baggage allowance, one pair of skis/poles will be transported
for an additional flat rate set by the airlines.

TRAVEL INSURANCE: Tour participants may avail themselves of the travel insurance ski protection plan which will
be sent upon receipt of initial deposit. It will be the participant's responsibility to cover themselves should
they have to cancel or interrupt their ski trip due to medical reasons only. Fee for this protection will be
provided after initial deposit is received. You will then decide which amount of coverage you wish to purchase,
fill out the form and send in with your payment directly to the insurance company in the envelope that will be
provided for this purpose. Ski Protection Plan does not cover administrative charges assessed by the FWSA.

RESPONSIBILITIES: Skil International Reservations, Inc., its representatives and cooperating organizations and
airlines, each and all expressly disclaim all responsibility and liability of any nature whatsoever for loss,
damage or injury to property or person due to any cause whatsoever occurring during a tour processed or sold by
them. The tour participant agrees to waive any claim against Skil International for the same. Trip, health and
accident insurance is available and, upon request, will be furnished and issued subject in all respects to the
foregoing and to all terms and conditions under which the means of transportation and/or other services provided
are offered and/or supplied. Tour participants agree that Skil International is acting as an agent for suppliers
---- hotels, transfer agents, restaurants, airlines, insurance carriers, and as such, has no responsibility or
liability of any nature whatsoever for loss, damage or injury to property or person resulting from the provisions
of any transport or service.

#####

SkiWatch Corner

MT. WATERMAN SKI AREA

The Far West Ski Association favors the preservation and improvement of the historic Mt. Waterman Ski Area. The proposed improvements will provide safer parking and expanded skiable terrain, both of which will bolster the ability of Mt. Waterman to provide skiing into the 21st century.

Mt. Waterman is the closest ski area to Los Angeles. It is essential in satisfying part of the demand for skiing of a very large skier population, much of which is located in the northeast quarter of the county. Mt. Waterman can supply excellent day skiing at the end of a very short drive when the San Gabriel Mountains receive snow.

The comparatively lower cost of skiing at Mt. Waterman and the relative ease in getting there are especially important for youth programs.

Mt. Waterman's proposal may further provide summer recreation and outing opportunities in a controlled environment. Furthermore, Mt. Waterman can become "a nature park within the forest" under the proposed development, providing a food source and a safe haven for wildlife.

The association thus favors the expansion and improvement of the Mt. Waterman Ski Area as envisioned under the Land Management Plan of the Angeles National Forest.

PROPOSED SHERWIN BOWL SKI DEVELOPMENT

The Far West Ski Association views the development for skiing of Sherwin Bowl to be a critical piece in providing skiing in the Eastern Sierra. Satisfying the Demand created by the Southern California market will be a major challenge for lands resource managers in the 21st century - as it is even now. Sherwin Bowl plays a major part in meeting this challenge.

It is the association's position that a balance of economic and resource-related values can best be met by the preferred alternative (number 5) of the US Forest Service.

The association has an increasing concern regarding the compression of an expanding skier population onto a constrained amount of ski terrain. While engineering calculations can readily show safe uphill conveyance numbers, it is far more difficult to assess on-hill safety and quality. That quality threshold is upon us in the Eastern Sierra, and further ski terrain is indicated. Certainly the safety threshold is not far behind.

The Association further notes that wildlife impacts are minimized by the mere operations schedule for the proposed ski area. The overwhelming impacts on the deer herd are not related to skiing, but to hunting and normal highway traffic. It is further a demonstrable fact that ski areas provide increased forage and edge cover for wildlife.

Construction in Mammoth Lakes, including the development on the meadows at the base of the proposed Sherwin Ski development, will continue whether skiing is provided in Sherwin Bowl or not. There may be localized sedimentation in surface water due to construction, but this can be substantially mitigated by site procedure.

The association feels that skiing in Sherwin Bowl is a Critical piece of the supply of skiing to an enormous California demand, and it is satisfied that development will not significantly impact environmental values.

Both were approved 4 Jan 90

FWSA Board of Directors

Both Reports submitted by John Watson, V. P. Public Affairs

The Far West Ski Association, founded in 1930, acts in the civic arena to encourage the development of skisport as a healthful outdoor recreation for the whole family. To do this, the association cooperates with governmental agencies, or other entities, to make the skiing experience available to the public at large and to obtain the fullest appropriate use of lands particularly suited to wintertime use and recreation.

In order to fulfill these general objectives, the Far West Ski Association is committed to the preservation of skiing opportunities for the future, increase in the number of ski sites available to the skier, and the enhancement of current skiing by prudent expansion of or improvement in existing facilities.

The association conducts independent analysis of skiing developments using a menu of support criteria developed in over 25 years of evaluation experience.

These support criteria include physical suitability, environmental protection, transportation access, multiple or year-round uses, proximity to demanded centers, improvement in the skiing experience, cost to the skier, and local factors.

The Research Committee is looking for attorneys, environmental engineers, wildlife specialists, urban planners, economists, constructors, and graduate students to conduct detailed fact-finding on skisport-related issues.

The Safety Committee needs lift safety and lift regulation experts, ski patrolmen, attorneys, and risk appraisers to provide technical advice on uplift conveyance safety and skier responsibility.

The Special Projects Group needs video production capabilities in production management, script, concept development, and editing.

All of the above positions are strictly volunteer in nature. Contact John Watson, VP-Public Affairs, FWSA, 2537-D Pacific Coast Highway, Suite 133, Torrance, CA 90505.

FAR WEST RACING ASSOCIATION

by Laura Medrum, FWSA Rep.

1989-90 Race Dates

Bay Area Open League

1/7/90	Northstar
1/27	Incline
1/28	Alpine Meadows
2/10 -11	Mt. Reba/Bear Valley
3/11	Donner Ski Ranch

Central League

1/7/90	Sierra Ski Ranch
2/3	Incline
3/3	Bear Valley
3/17	Mammoth

Chamonix League (LAC)

12/17/89	Mammoth
1/21/90	Mammoth
2/11	Mammoth
3/4	Mammoth
3/25	Mammoth(Dual)

Elske League (LAC)

12/16/89	Mammoth
1/6/90	Mammoth
2/3	Mammoth
3/3	Mammoth
3/31	Mammoth (Dual)

Rokka League (LAC)

12/9/89	Mammoth
1/20/90	Mammoth
2/10	Mammoth
3/10	Mammoth
3/31	Mammoth (Standard)
4/1	Mammoth (Dual)

Inland League

12/9/89	Mammoth
1/7/90	Mammoth
1/13	Snow Forest
2/10	Mammoth
2/17	Snow Forest
3/10	Snow Forest

San Diego Alpine League

12/17/89	Bear Mountain (Dual)
1/7/90	Mammoth
1/28	Mammoth
2/11	Bear Mountain (GS)
2/25	Mammoth
3/11	Mammoth

Schuski League (OC)

12/10/89	Mammoth
1/13/90	Mammoth
2/11	Mammoth
3/17	Mammoth

Sierra League

12/17/89	Northstar
1/6/90	Kirkwood
2/10	Alpine Meadows
2/25	Incline
3/3	Donner Ski Ranch
3/11	Northstar

Singles League (BAC)

1/6/90	Alpine Meadows
1/20	Ski Incline
2/4	Alpine Meadows
2/24-25	Dodge Ridge
3/10	Alpine Meadows

Additional Races 1990

3/17-18	Central, Inland and San Diego Challenge at Mammoth
3/24	Nor-Cals - Alpine Meadows
3/24	LAC - Mammoth
3/25	FWRA Challenge - Mammoth
4/7-8	Far West Championships - Mammoth
4/6	Pacesetters Race

MAMMOTH MOUNTAIN SKI AREA

JUNE MOUNTAIN SKI AREA

1989-90 LIFT RATES



Mammoth/June
SKI AREA

DAILY LIFT RATES

	ADULT	CHILD*
All Day	\$35.00	\$17.00
Afternoon**	\$25.00	\$12.50

MIDWEEK PACKAGE SPECIALS***

3 Consecutive Mid-Week days	\$ 99.00	\$49.00
4 Consecutive Mid-Week days	\$126.00	\$63.00
5 Consecutive Mid-Week days	\$140.00	\$70.00

***Mid-Week Package specials are not valid during holiday periods:

Thanksgiving	November 23 - 26
Christmas	December 16 - Jan. 1
Martin Luther King Day	January 15
Washington's Birthday	February 19

FREQUENT SKIERS SPECIAL

10 Ticket Book Good Anytime	\$290.00	\$145.00
-----------------------------	----------	----------

NON-RESTRICTED SEASON PASS

Adult	\$1060.00
Child	\$ 530.00
Family	\$2650.00

SCENIC RIDE

Gondola Only	Adult - \$7.00	Child - \$3.50
--------------	----------------	----------------

SPRING RATES

Adult - \$25.00	Child \$12.50	Pass - \$250.00
-----------------	---------------	-----------------

Spring rates go into effect on May 1, 1990

*Children - Ages 7-12, 6 & Under Ski Free

**Afternoon Starts at 12:30 p.m.

Multiple day tickets are available any time for 2, 3, 4, or 5 consecutive days, or 3 out of 4 days at all day rates. This includes weekends and holiday periods.

FAR WEST RACING ASSOCIATION

FWSA COMMITTEE CHAIRMEN & OTHER REPRESENTATIVES

BOARD OF DIRECTORS/OFFICERS

PRESIDENT

John Catozzi
2007 Perry Avenue
Redondo Beach, CA 90278
Res. (213) 372-2433

PAST PRESIDENT

George Eachus
3388 Paseo Halcon
San Clemente, CA 92672
Res. (714) 493-8738

SECRETARY

Lynelle Calkins
565 Esplanade #105
Redondo Beach, CA 90277
Res (213) 372-8613

FINANCIAL OFFICER

Marty Purmort
4642 Simone Way
Cypress, CA 90630
Res. (714) 826-5014

RULES CHAIRMAN

Wes Erck
21095 Gary Drive #214
Castro Valley, CA 9454
Res. (415) 581-5706

V.P. CHAMPIONSHIPS

George Eachus
3388 Paseo Halcon
San Clemente, CA 92672
Res. (714) 493-8738

V.P. SPONSORSHIPS

Co-Chairman:

Gene Fulkerson
1650 Chatsworth Blvd.
San Diego, CA 92107
Res. (619) 224-4221

Ellen Loe
5800 Green Valley Circle #209
Culver City, CA 90230
Res. (213) 649-4750

FWSA REPRESENTATIVE

Laura Meldrum
1356 Pacific Beach Drive
San Diego, CA 92109
Res. (619) 483-7290

LEAGUE CHAIRMEN

BAY AREA COUNCIL

Open League

Nancy Kelly '89 - '90
11881 Alpine Road
Lodi, CA 95240
Res. (209) 368-7000

Singles League

Bob Ellis '89 - '90
906 Concord Street
Pleasanton, CA 94566
Res. (415) 846-6857

CENTRAL COUNCIL

Central League

Dan Nagle '89 - '90
1667 Partridge
San Luis Obispo, CA 93401
Res. (805) 544-9497

INLAND COUNCIL

Inland League

Debbie Warzynski '89 - '90
2852 Pinelawn Drive
La Crescenta, CA 92507
Res. 818) 248-4655

LOS ANGELES COUNCIL

Chamonix League

Deborah LeVine '89 - '90
18410 Glenburn Ave.
Torrance, CA 90504
Res. (213) 327-1946

Elske League

Warren Scheinin '89 - '90
2210-A Marshallfield Lane
Redondo Beach, CA 90278
Res. (213) 372-0269

Rokka League

Van Smith '89 - '90
644 Manhattan Beach Blvd. #9
Manhattan Beach, CA 90266
Res. (213) 374-0996

ORANGE COUNCIL

Schuski League

Dave Whittaker '89 - '90
18293 Santa Laurretta
Fountain Valley, CA 92708
Res. (714) 963-4157

SAN DIEGO COUNCIL

San Diego Alpine League

Richard Shirk '89 - '90
3089-C Claremont Drive #217
San Diego, CA 92127
Res. (619) 488-9669

SIERRA COUNCIL

Sierra League

Joe Loader '89 - '90
7220 Marlin
Reno, NV 89506
Res. (702) 972-8019

INDUSTRY LIAISON

Jane Wyckoff Clark
1521 Kalua Lane
Tustin, CA 92680
Res. (714) 731-6164

DATABASE MANAGER

Janie "Frankie" Hansen
3921 Beverly Glen Blvd.
Sherman Oaks, CA 91423
Res. (818) 990-1630

FWRA REPRESENTATIVE

Laura Meldrum
1356 Pacific Beach Drive
San Diego, CA 92109
Res. (619) 483-7290

SPORTSFEST COORDINATOR

Nick Duvally
1142 Manhattan Avenue, Box 160
Manhattan Beach, CA 90266
Res. (213) 372-2845

FWSA - PAST PRESIDENTS

1936 - 38Arnold Weber
1938 - 41James Connel
1941 - 45Frank Howard
1945 - 48Albert Sigal
1948 - 50Chris Schwarzenbach
1950 - 51Arthur Van De Camp
1951 - 52Frank Ferguson
1952 - 55Paul Smith
1955 - 57Wes Hadden
1957 - 59Ed Johnson
1959 - 62Byron Nishikian
1962 - 63Sut Kunkel
1963 - 65Len Speicher
1965 - 67Stan Walton
1967 - 69Carl Grover
1969 - 71Dick Goetzman
1971 - 73John Watson
1973 - 76Dick Croft
1976 - 81Ed Gehle
1981 - 85Jane Wyckoff
1985 - 87Janie "Frankie" Hansen
1987 - 88Howard Wickersham
1988 - 89Mike Favia

THE COUNCILMAN

CALENDAR OF EVENTS

1990

1/20 thru 1/27	USRSA Ski Week - Snowmass/Aspen, Colorado
1/20 thru 1/27	USSA Ski Week - Vail, Colorado
1/27 thru 2/3	FWSA Ski Week - Telluride, Colorado
1/27 thru 2/3	LAC Annual Trip - Steamboat Springs, Colorado
3/3 thru 3/4	Jimmie Huega Ski Express Marathon, Snow Summit, CA
3/17 thru 3/18	Central, Inland and San Diego Challenge, Mammoth, CA
3/24	L. A. Council Championships - Mammoth
3/25	FWRA Far West Ski Club Challenge - Mammoth
4/6 thru 4/8	Far West Championships - Mammoth
4/21	L.A. Council - an evening at Medieval Times, Buena Park
6/1 thru 6/3	FWSA Annual Convention (60th Anniversary), Irvine, CA
8/30 thru 9/9	FWSW International, Las Lenas, Argentina

"THE COUNCILMAN"

Far West Ski Association
c/o Mary Costigan, Editor
10323 E. Olive Street
Temple City, CA 91780

RETURN POSTAGE GUARANTEED

**BULK RATE
U.S. POSTAGE PAID
VAN NUYS, CA
PERMIT NO. 560**

FWSA'S 60TH ANNIVERSARY & 58TH ANNUAL
CONVENTION - JUNE 1-3, 1990 IRVINE, CA

Gene Fulkerson, V.P. of Development
Far West Ski Association
1650 Chatsworth Blvd.
San Diego, CA 92107

LAC